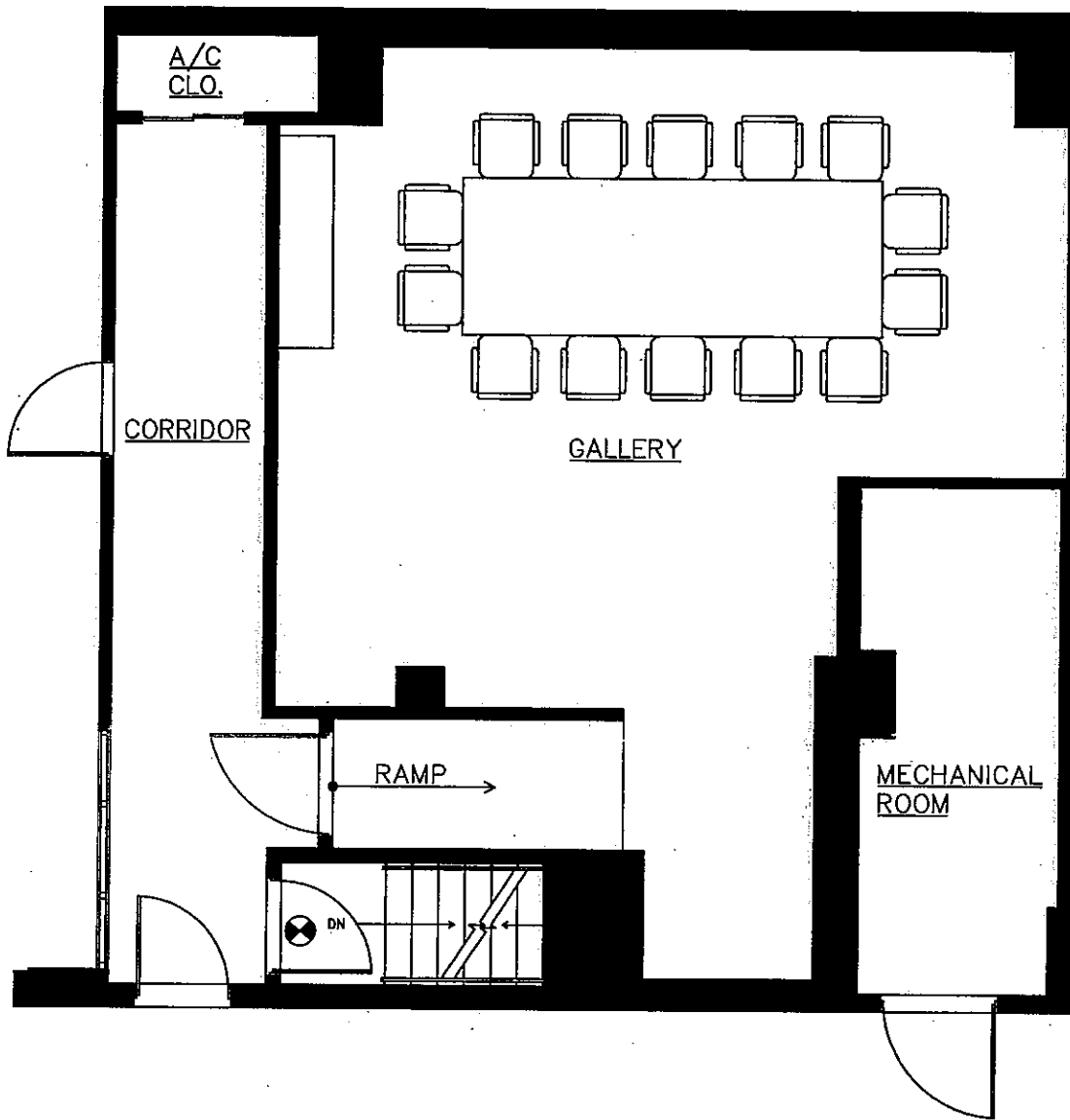


CONFERENCE ROOM - THEATRE LAYOUT

SEATING: 26 PEOPLE

HUDSON ROOM

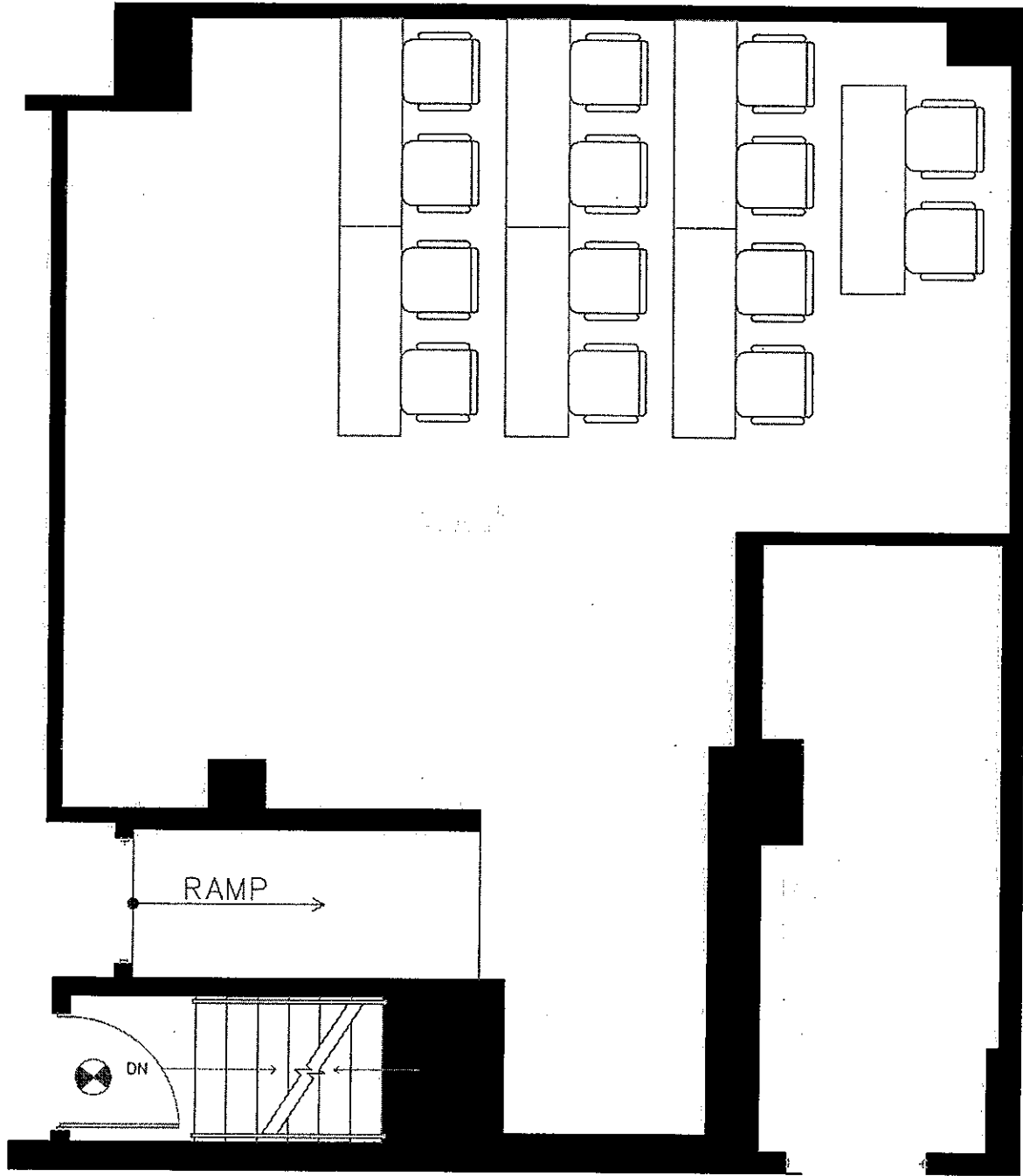
Scale: 1/8" = 1'-0"



SMALL CONFERENCE ROOM -LAYOUT

SEATING: 14 PEOPLE

HUDSON ROOM



CONFERENCE ROOM - TRAINING LAYOUT
SEATING: 12 PEOPLE

HUDSON ROOM

Scale: 1/8" = 1'-0"